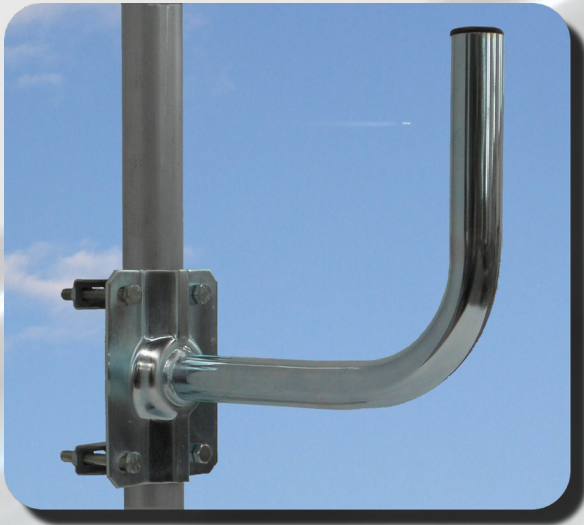


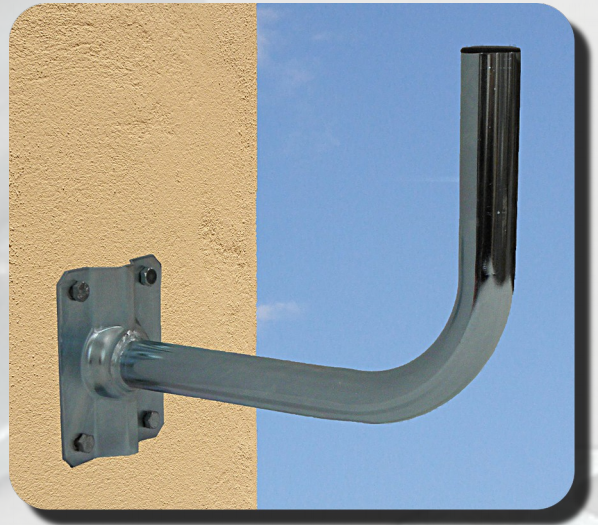
# Mounts

## Wall Mounts Supporti a muro



**Wall/Pole Mount 220 mm**

- Galvanized steel
- 30x1,5 mm tube
- distance from wall 220 mm
- Wall plate 140x110x2,5 mm



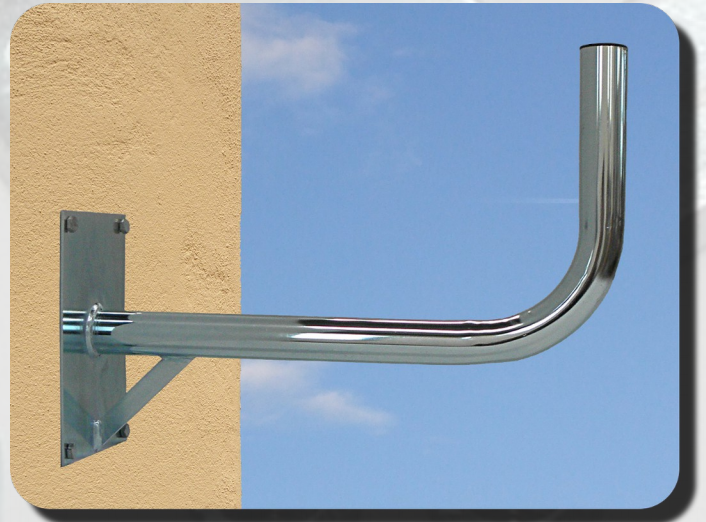
**Wall/Pole Mount 300 mm**

- Galvanized steel
- 35x1,5 mm tube
- distance from wall 300 mm
- Wall plate 140x110x2,5 mm



**Wall/Pole Mount 400 mm**

- Galvanized steel
- 40x1,5 mm tube
- distance from wall 400 mm
- Wall plate 140x110x2,5 mm



**Wall Mount 450 mm reinforced**

- Galvanized steel
- 40x1,5 mm tube
- distance from wall 450 mm
- Wall plate 220x150x3,0 mm



Design Production Technology

**DPTEch S.r.l.**

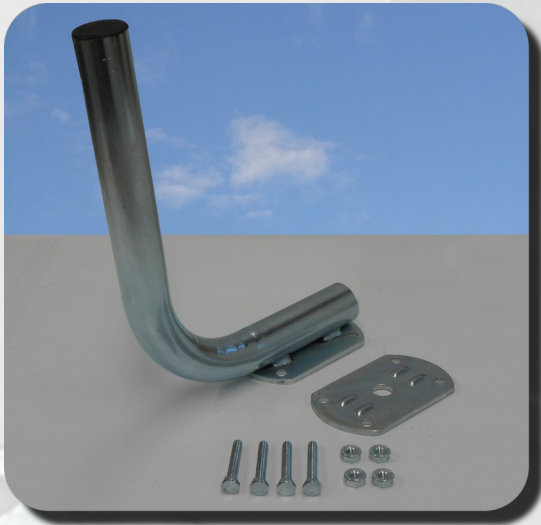
Plants - Stabilimento e Amministrazione  
Via Veneto, 18 - 36027 Rosà (VI) - ITALY

tel. +39 0424 539801

[www.dp-tech.eu](http://www.dp-tech.eu)  
[info@dp-tech.eu](mailto:info@dp-tech.eu)

# Mounts

## Mounts for railing and rotor Supporti a ringhiera e per antenne motorizzate



**Railing Mount 220 mm**

- Galvanized steel
- 40x1,5 mm tube
- distance from railing 220 mm
- Railing plates 130x80x5,0 mm



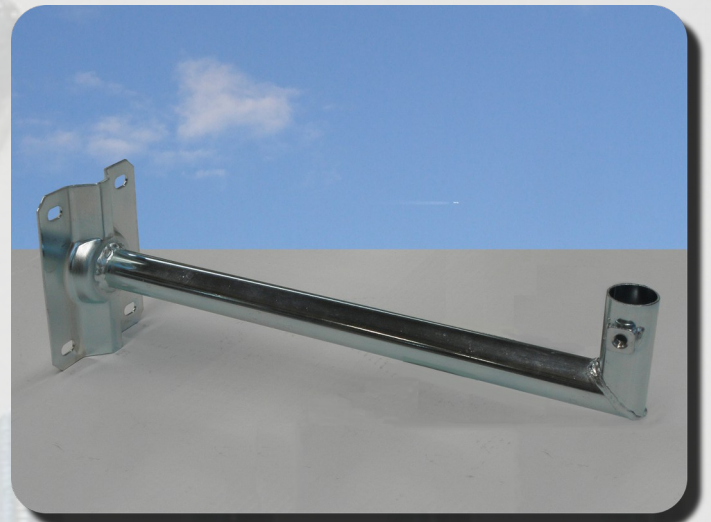
**Railing Mount 320 mm**

- Galvanized steel
- 40x1,5 mm tube
- distance from railing 320 mm
- Railing plates 130x80x5,0 mm



**Railing Mount 420 mm**

- Galvanized steel
- 40x1,5 mm tube
- distance from railing 420 mm
- Railing plates 130x80x5,0 mm



**Wall/Pole Mount 420 mm for rotor**

- Galvanized steel
- 30x1,5 mm tube
- distance from wall 420 mm
- Wall plate 140x110x2,5 mm



Design Production Technology

**DP Tech S.r.l.**

Plants - Stabilimento e Amministrazione  
Via Veneto, 18 - 36027 Rosà (VI) - ITALY

tel. +39 0424 539801

[www.dp-tech.eu](http://www.dp-tech.eu)  
[info@dp-tech.eu](mailto:info@dp-tech.eu)

Rev. 03 - 25/05/2012

